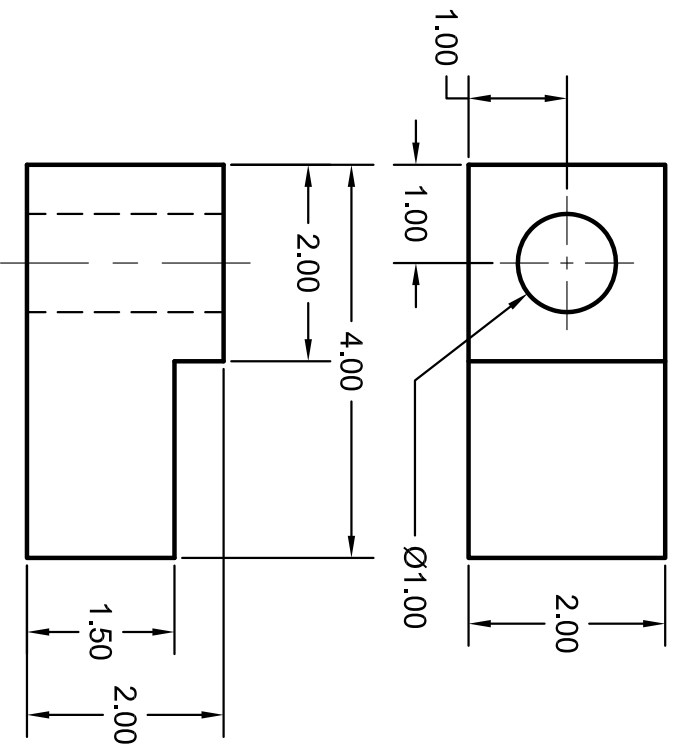
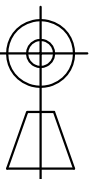


REVISION HISTORY			
REV	DESCRIPTION	DATE	APPROVED
A	ORIGINAL RELEASE	07-16-2020	



NOTE 1: BREAK EDGES & CORNERS  
 MATERIAL: 6061-T6511 ALUMINUM  
 ASTM B221-14

DIMENSIONING & TOLERANCING IN ACCORDANCE WITH ANSI/ASME Y14.5M - 1994



THIRD ANGLE

THIS DRAWING AND/OR SPECIFICATION CONTAINS INFORMATION THAT IS NOT CONFIDENTIAL TO THE ANYBODY. BY RETENTION, THE RECIPIENT AGREES TO REPRODUCE OR COPY IT IN PART AND IN WHOLE WITHOUT WRITTEN PERMISSION, AND TO MAKE ANY USE OF IT AS SEEMS FITTING. ET CETERA.

UNLESS OTHERWISE SPECIFIED:  
 ALL DIMENSIONS ARE INCHES

UNSPECIFIED TOLERANCES

LENGTH	SURFACE FINISH
.0 = ±.1	RMS 140
.00 = ±.01	µin
.000 = ±.005	ANGULAR ±.25°
.0000 = ±.005	

UNIVERSITY OF MEMPHIS  
 DEPARTMENT OF ENGINEERING TECHNOLOGY

MOUNT, PANEL  
 TECH 4472

SIZE	DATE	DWG NO	REV
A	07-16-2020	HW F20	A
SCALE: 1=1			DRAWN BY: R.H.