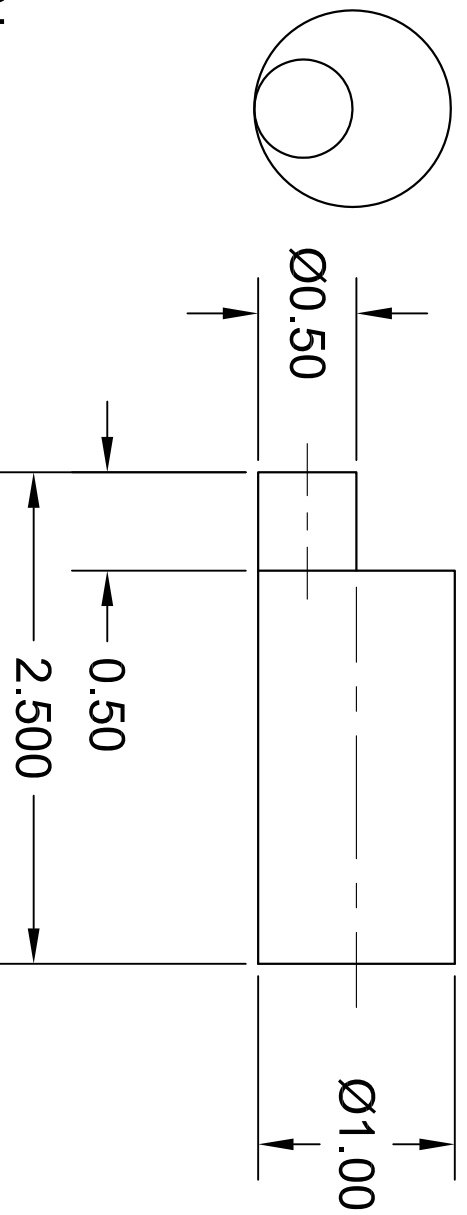


REVISION HISTORY			
REV	DESCRIPTION	DATE	APPROVED
A	ORIGINAL RELEASE		

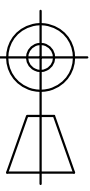


**MATERIAL**  
**6061-T6511**  
**ASTM B221-14**

DIMENSIONING & TOLERANCING IN ACCORDANCE WITH ANSI/ASME Y14.5M - 1994

THIRD ANGLE

THIS DRAWING AND/OR SPECIFICATION CONTAINS INFORMATION THAT IS NOT CONFIDENTIAL TO THE UNIVERSITY OF MEMPHIS. BY RETENTION, THE RECIPIENT AGREES TO REPRODUCE OR COPY IT IN PART AND IN WHOLE WITHOUT WRITTEN PERMISSION, AND TO MAKE ANY USE OF IT AS SEEMS FITTING.



UNLESS OTHERWISE SPECIFIED: ALL DIMENSIONS ARE INCHES

UNSPECIFIED TOLERANCES

LENGTH	SURFACE FINISH
.0 = ±.1	RMS 140
.00 = ±.01	µin
.000 = ±.005	ANGULAR ±.25°
.0000 = ±.005	

UNIVERSITY OF MEMPHIS  
 DEPARTMENT OF ENGINEERING TECHNOLOGY

**ECCENTRIC SHAFT**

SIZE	DATE	DWG NO	REV
A			

SCALE: 1=1

DRAWN BY: RH