

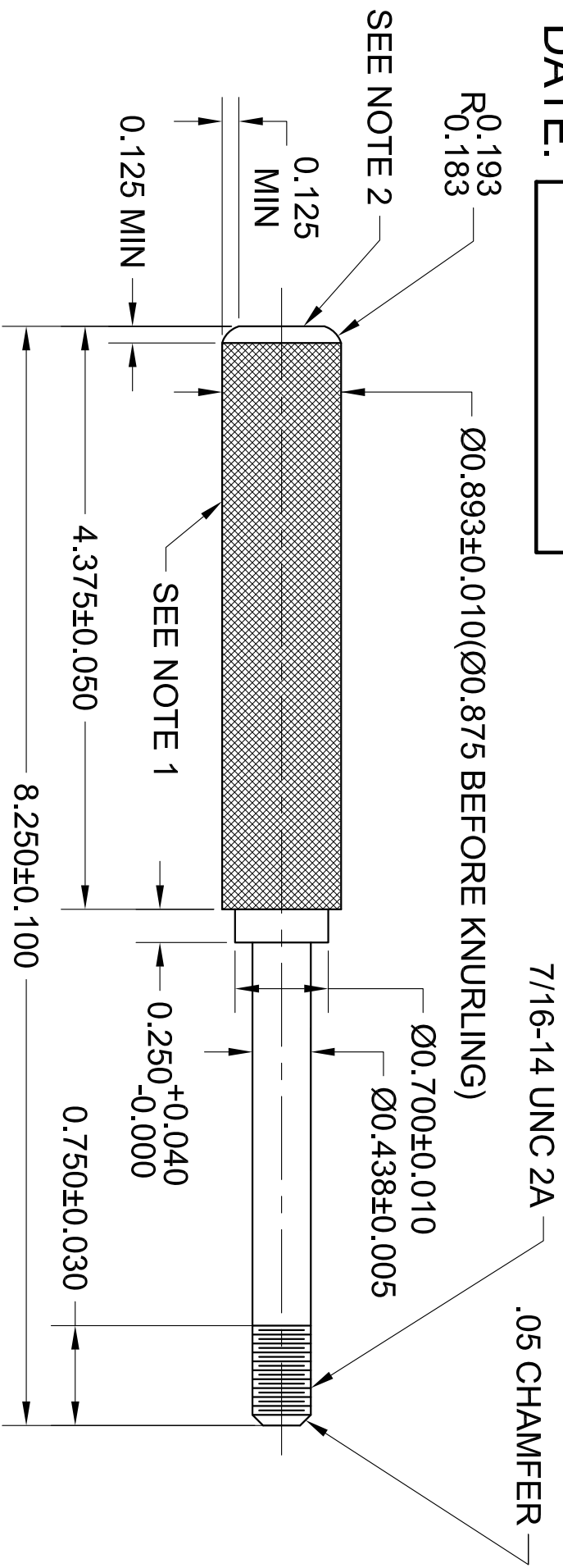
NAME:  
DATE:

[Empty box for Name and Date]

GRADE:

[Empty box for Grade]

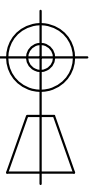
REVISION HISTORY			
REV	DESCRIPTION	DATE	APPROVED
A	ORIGINAL RELEASE	01/08/2019	



NOTE 1: MEDIUM DIAMOND KNUURL, 20 TO 35 TPI  
 NOTE 2: END MUST BE FACED COMPLETELY  
 NOTE 3: SURFACE ROUGHNESS Ra 150 MICRORINCHES MAX (EXCEPT KNUURLS)

MATERIAL: 6061-T6511, ASTM B221-14

DIMENSIONING & TOLERANCING IN ACCORDANCE WITH ANSI/ASME Y14.5M - 1994



UNLESS OTHERWISE SPECIFIED: ALL DIMENSIONS ARE INCHES

UNSPECIFIED TOLERANCES

LENGTH	SURFACE FINISH
.0 = ±.1	RMS 140
.00 = ±.01	µin
.000 = ±.005	ANGULAR ±.25°
.0000 = ±.005	

THIS DRAWING AND/OR SPECIFICATION CONTAINS INFORMATION THAT IS NOT CONFIDENTIAL TO THE UNIVERSITY OF MEMPHIS. BY RETENTION, THE RECIPIENT AGREES TO REPRODUCE OR COPY IT IN PART AND IN WHOLE WITHOUT WRITTEN PERMISSION, AND TO MAKE ANY USE OF IT AS SEEMS FITTING.

UNIVERSITY OF MEMPHIS  
 DEPARTMENT OF ENGINEERING TECHNOLOGY

HAMMER HANDLE

SIZE	DATE	DWG NO	REV
Q	01-08-2019	UM001	A
SCALE: 1=1		DRAWN BY: RH	