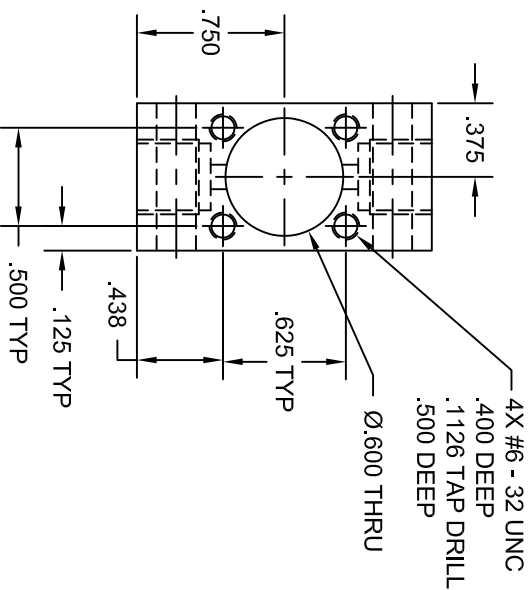
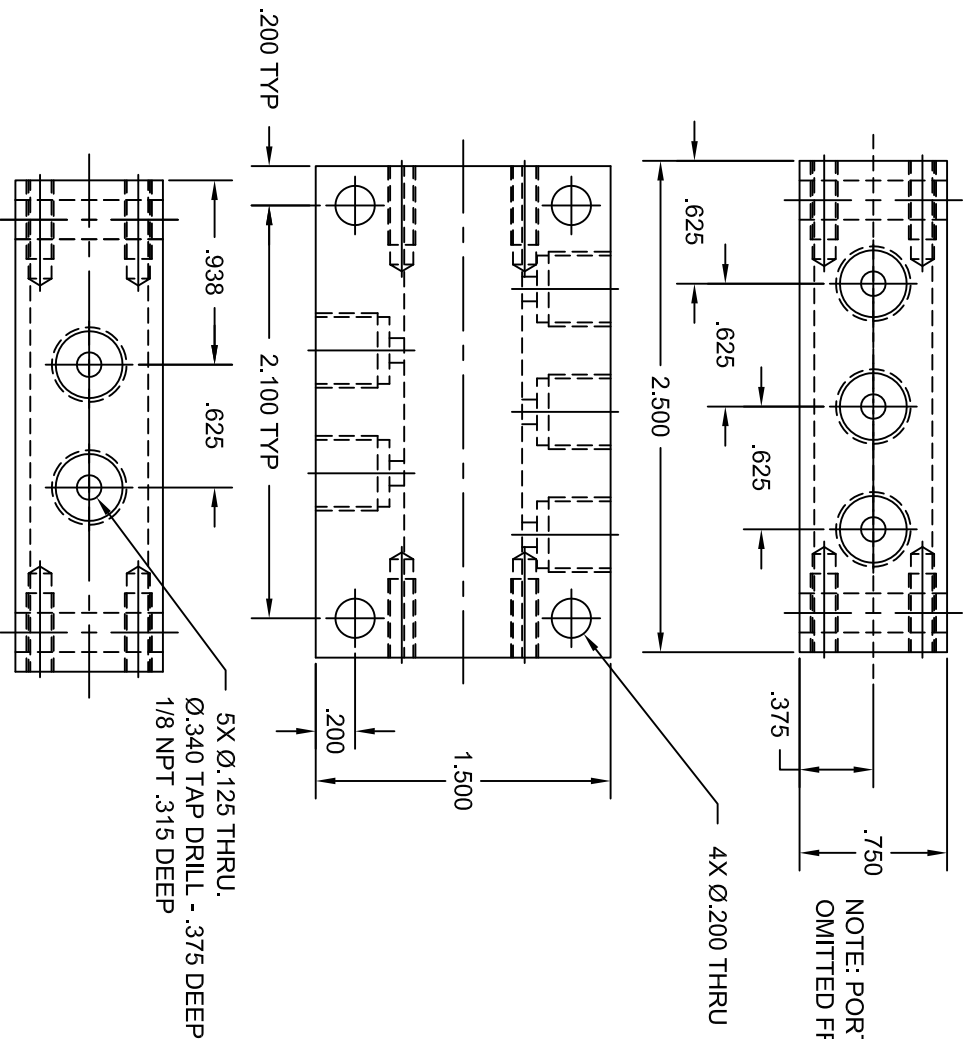


REVISION HISTORY			
REV	DESCRIPTION	DATE	APPROVED
A	ORIGINAL RELEASE	05-19-2016	

NOTE: PORTS FOR OTHER SIDE OMITTED FROM THIS VIEW.



PART NO. 5000-001

UNIVERSITY OF MEMPHIS
DEPARTMENT OF ENGINEERING TECHNOLOGY

5040 SERIES
VALVE BODY

DIMENSIONING & TOLERANCING IN
ACCORDANCE WITH
ANSI/ASME Y14.5M - 1994



THIS DRAWING AND/OR SPECIFICATION CONTAINS
INFORMATION THAT IS NOT CONFIDENTIAL TO THE
UNIVERSITY OF MEMPHIS. BY RETENTION, THE
RECIPIENT AGREES TO REPRODUCE OR COPY IT IN
PART AND IN WHOLE WITHOUT WRITTEN PERMISSION,
AND TO MAKE ANY USE OF IT AS SEEMS FITTING.

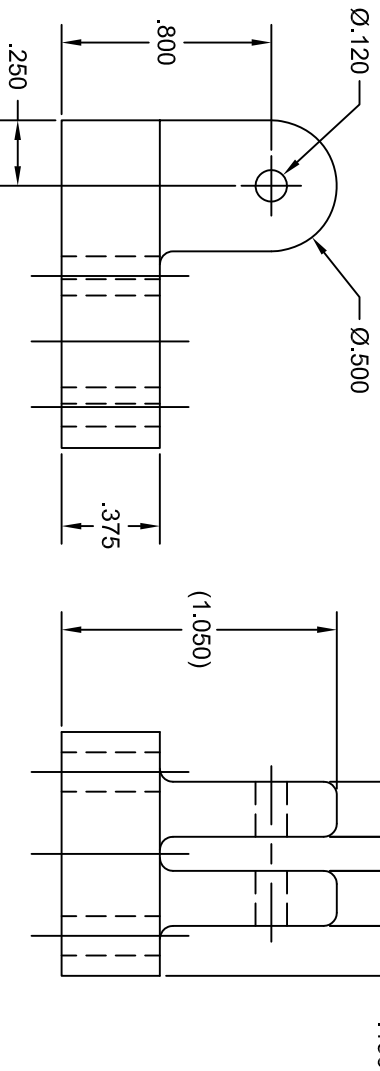
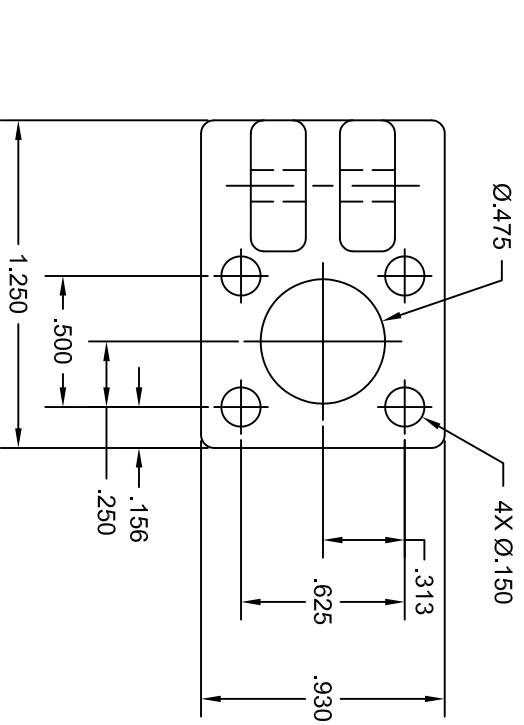
UNLESS OTHERWISE SPECIFIED:
ALL DIMENSIONS ARE INCHES

UNSPECIFIED TOLERANCES

LENGTH	SURFACE FINISH
.0 = ±.1	RMS 140
.00 = ±.01	µin
.000 = ±.005	ANGULAR ±.25°
.0000 = ±.005	

SIZE	DATE	DWG NO	REV
A	05-19-2016	504010-001	A
SCALE: 1=1		DRAWN BY: RH	

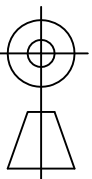
REVISION HISTORY			
REV	DESCRIPTION	DATE	APPROVED
A	ORIGINAL RELEASE	05-19-2016	



PART NO. 5000-002

NOTE: ALL FILLETS AND ROUNDS .050

DIMENSIONING & TOLERANCING IN ACCORDANCE WITH ANSI/ASME Y14.5M - 1994



THIRD ANGLE

UNLESS OTHERWISE SPECIFIED: ALL DIMENSIONS ARE INCHES

UNSPECIFIED TOLERANCES

LENGTH	SURFACE FINISH
.0 = ±.1	RMS 140
.00 = ±.01	µin
.000 = ±.005	ANGULAR ±.25°
.0000 = ±.005	

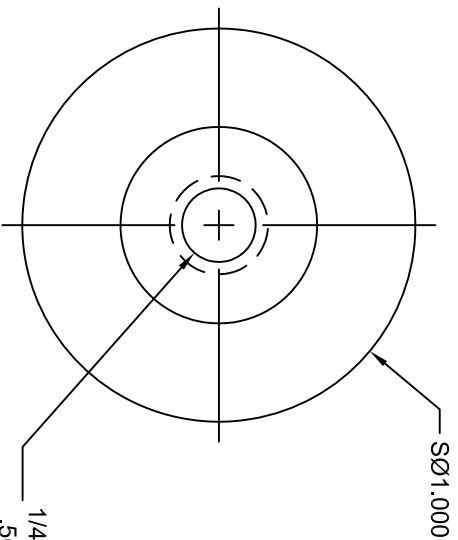
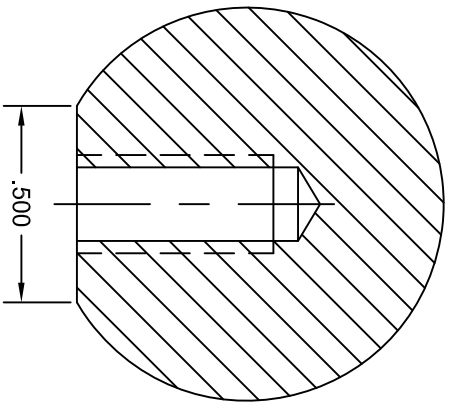
THIS DRAWING AND/OR SPECIFICATION CONTAINS INFORMATION THAT IS NOT CONFIDENTIAL TO THE UNIVERSITY OF MEMPHIS. BY RETENTION, THE RECIPIENT AGREES TO REPRODUCE OR COPY IT IN PART AND IN WHOLE WITHOUT WRITTEN PERMISSION, AND TO MAKE ANY USE OF IT AS SEEMS FITTING.

UNIVERSITY OF MEMPHIS
DEPARTMENT OF ENGINEERING TECHNOLOGY

5040 SERIES
FULCRUM

SIZE	DATE	DWG NO	REV
A	05-19-2016	504010-002	A
SCALE: .75=1		DRAWN BY: RH	

REVISION HISTORY			
REV	DESCRIPTION	DATE	APPROVED
A	ORIGINAL RELEASE	05-19-2016	



PART NO. 5000-003

BRASS

UNIVERSITY OF MEMPHIS
DEPARTMENT OF ENGINEERING TECHNOLOGY

5040 SERIES VALVE
OPERATING KNOB

SIZE	DATE	DWG NO	REV
A	05-19-2016	504010-003	A

SCALE: 2=1

DRAWN BY: RH

UNLESS OTHERWISE SPECIFIED:
ALL DIMENSIONS ARE INCHES

UNSPECIFIED TOLERANCES

LENGTH	SURFACE FINISH
.0 = ±.1	RMS 140
.00 = ±.01	µin
.000 = ±.005	ANGULAR ±.25°
.0000 = ±.005	

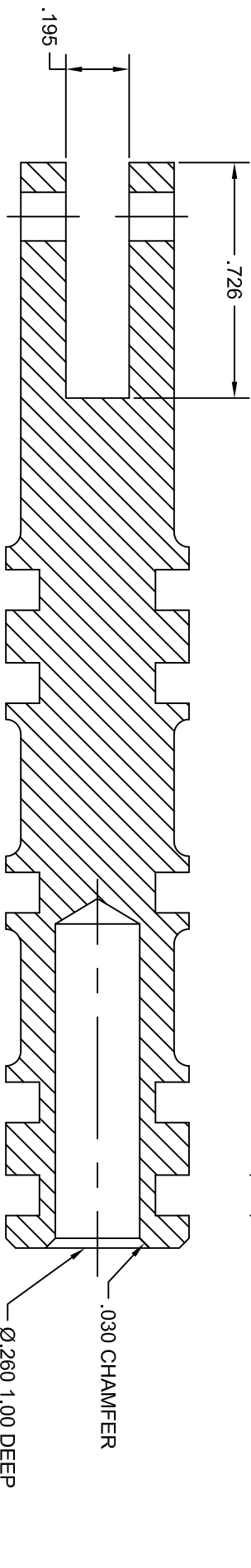
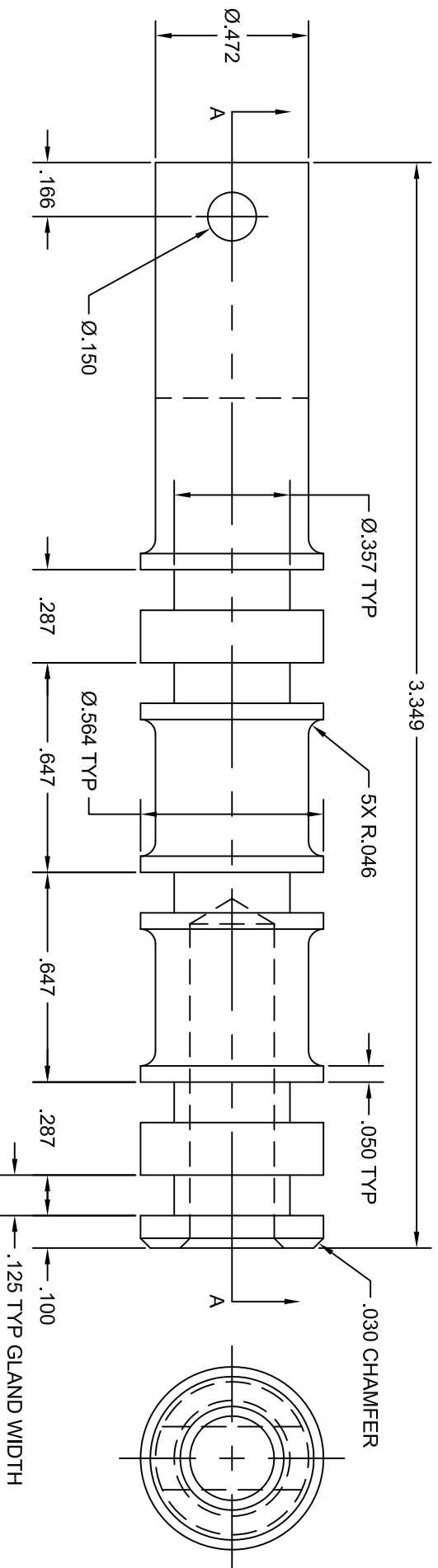


THIRD ANGLE

DIMENSIONING & TOLERANCING IN
ACCORDANCE WITH
ANSI/ASME Y14.5M - 1994

THIS DRAWING AND/OR SPECIFICATION CONTAINS
INFORMATION THAT IS NOT CONFIDENTIAL TO THE
UNIVERSITY OF MEMPHIS. BY RETENTION, THE
RECIPIENT AGREES TO REPRODUCE OR COPY IT IN
PART AND IN WHOLE WITHOUT WRITTEN PERMISSION,
AND TO MAKE ANY USE OF IT AS SEEMS FITTING.

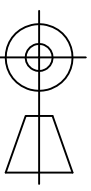
REVISION HISTORY			
REV	DESCRIPTION	DATE	APPROVED
A	ORIGINAL RELEASE	05-19-2016	



SECTION A-A

PART NO. 5000-004
1018 STEEL

DIMENSIONING & TOLERANCING IN ACCORDANCE WITH ANSI/ASME Y14.5M - 1994



THIRD ANGLE

UNLESS OTHERWISE SPECIFIED: ALL DIMENSIONS ARE INCHES

UNSPECIFIED TOLERANCES

LENGTH	SURFACE FINISH
.0 = ±.1	RMS 140
.00 = ±.01	µin
.000 = ±.005	ANGULAR ±.25°
.0000 = ±.005	

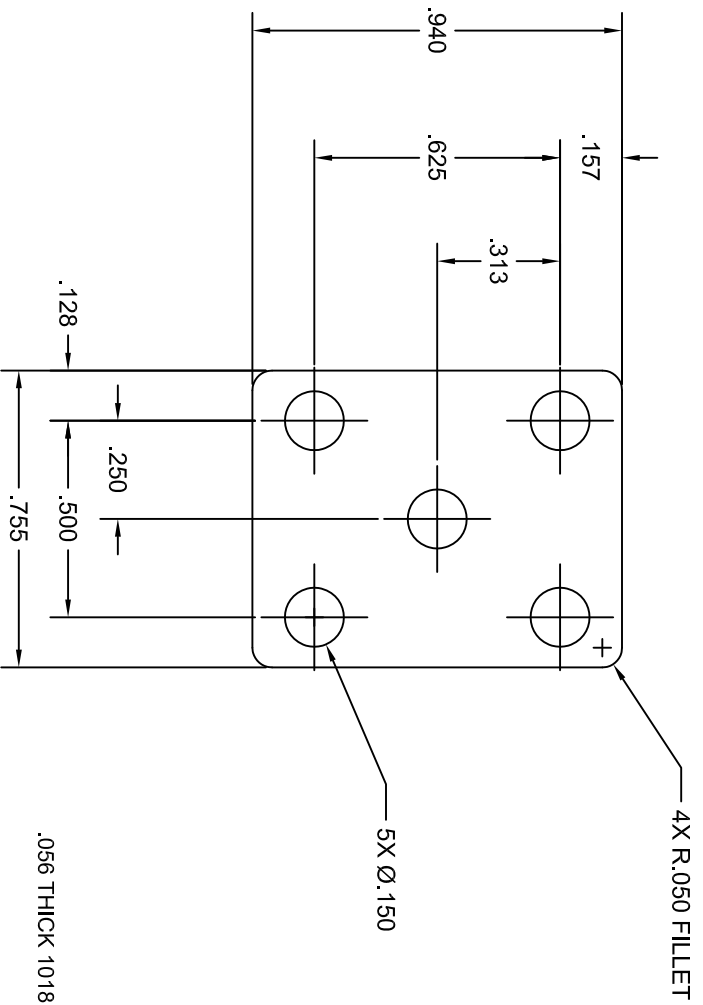
THIS DRAWING AND/OR SPECIFICATION CONTAINS INFORMATION THAT IS NOT CONFIDENTIAL TO THE UNIVERSITY OF MEMPHIS. BY RETENTION, THE RECIPIENT AGREES TO REPRODUCE OR COPY IT IN PART AND IN WHOLE WITHOUT WRITTEN PERMISSION, AND TO MAKE ANY USE OF IT AS SEEMS FITTING.

UNIVERSITY OF MEMPHIS
DEPARTMENT OF ENGINEERING TECHNOLOGY

5040 SERIES VALVE
SPOOL

SIZE	DATE	DWG NO	REV
A	05-19-2016	504010-004	A
SCALE: 2=1		DRAWN BY: RH	

REVISION HISTORY			
REV	DESCRIPTION	DATE	APPROVED
A	ORIGINAL RELEASE	05-19-2016	



DIMENSIONING & TOLERANCING IN ACCORDANCE WITH ANSI/ASME Y14.5M - 1994



THIS DRAWING AND/OR SPECIFICATION CONTAINS INFORMATION THAT IS NOT CONFIDENTIAL TO THE UNIVERSITY OF MEMPHIS. BY RETENTION, THE RECIPIENT AGREES TO REPRODUCE OR COPY IT IN PART AND IN WHOLE WITHOUT WRITTEN PERMISSION, AND TO MAKE ANY USE OF IT AS SEEMS FITTING.

UNLESS OTHERWISE SPECIFIED: ALL DIMENSIONS ARE INCHES

UNSPECIFIED TOLERANCES

LENGTH	SURFACE FINISH
.0 = ±.1	RMS 140 $\sqrt{}$
.00 = ±.01	μ in
.000 = ±.005	ANGULAR ±.25°
.0000 = ±.005	

UNIVERSITY OF MEMPHIS
DEPARTMENT OF ENGINEERING TECHNOLOGY

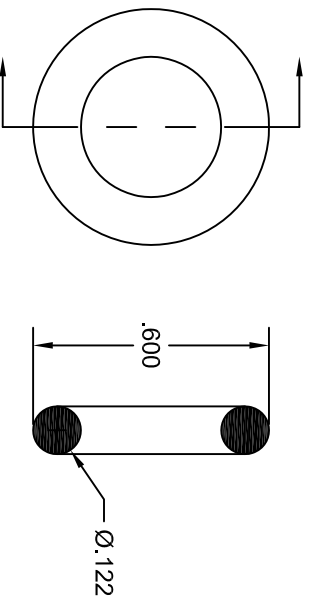
5040 SERIES VALVE
END PLATE

SIZE	DATE	DWG NO	REV
A	05-19-2016	504010-005	A

SCALE: 2=1

DRAWN BY: RH

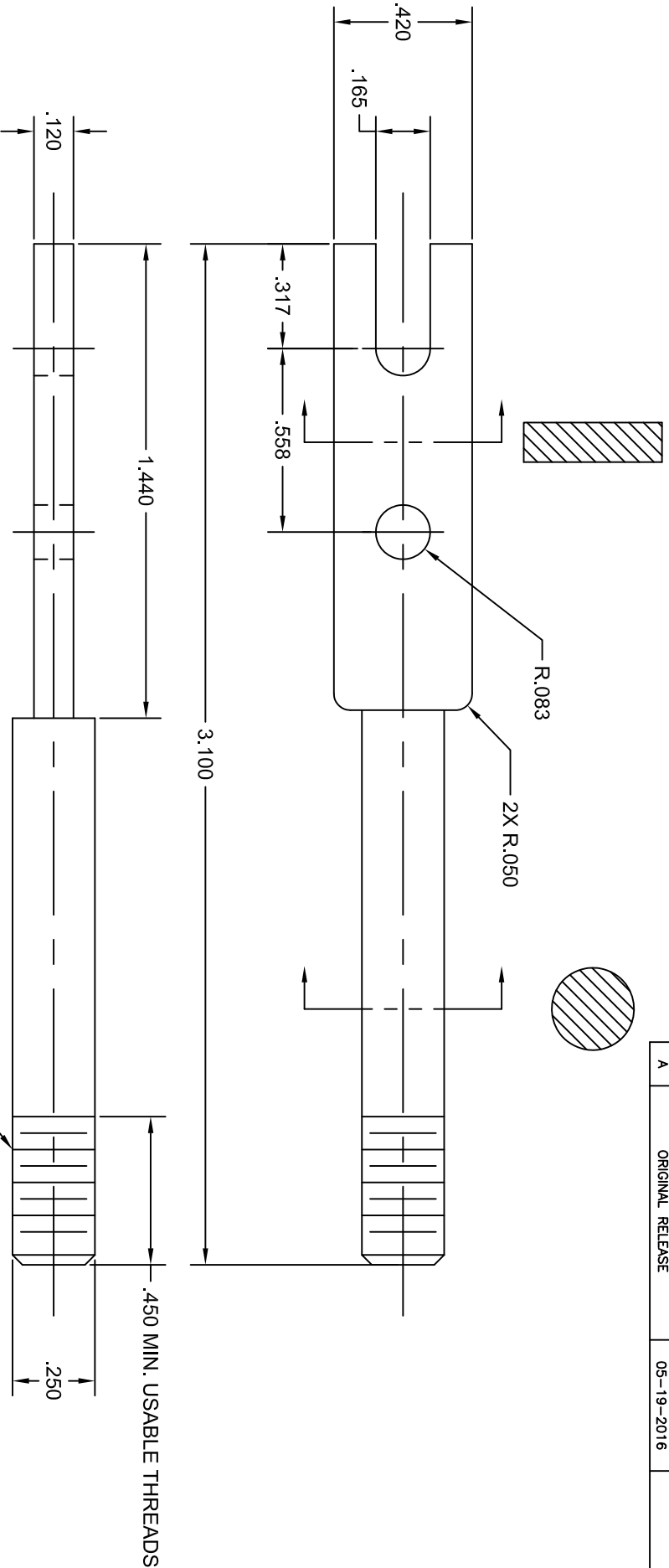
REVISION HISTORY			
REV	DESCRIPTION	DATE	APPROVED
A	ORIGINAL RELEASE	05-19-2016	



BUNA-N RUBBER, 40 SHORE HARDNESS
 PART NO. 5000-006

DIMENSIONING & TOLERANCING IN ACCORDANCE WITH ANSI/ASME Y14.5M - 1994	THIRD ANGLE	UNLESS OTHERWISE SPECIFIED: ALL DIMENSIONS ARE INCHES		UNIVERSITY OF MEMPHIS DEPARTMENT OF ENGINEERING TECHNOLOGY	
		UNSPECIFIED TOLERANCES	SURFACE FINISH RMS 140 μ in		
THIS DRAWING AND/OR SPECIFICATION CONTAINS INFORMATION THAT IS NOT CONFIDENTIAL TO THE UNIVERSITY OF MEMPHIS. BY RETENTION, THE RECIPIENT AGREES TO REPRODUCE OR COPY IT IN PART AND IN WHOLE WITHOUT WRITTEN PERMISSION, AND TO MAKE ANY USE OF IT AS SEEMS FITTING.		LENGTH .0 = \pm .1 .00 = \pm .01 .000 = \pm .005 .0000 = \pm .005	ANGULAR \pm .25°	5040 SERIES VALVE O-RING	
		SIZE A	DATE 05-19-2016	DWG NO 504010-006	REV A
		SCALE: 2=1	DRAWN BY: RH		

REVISION HISTORY			
REV	DESCRIPTION	DATE	APPROVED
A	ORIGINAL RELEASE	05-19-2016	

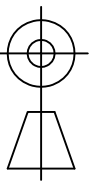


PART NO. 5000-007
1018 STEEL ROD

UNIVERSITY OF MEMPHIS
DEPARTMENT OF ENGINEERING TECHNOLOGY

5040 SERIES VALVE
LEVER

DIMENSIONING & TOLERANCING IN
ACCORDANCE WITH
ANSI/ASME Y14.5M - 1994



THIRD ANGLE

THIS DRAWING AND/OR SPECIFICATION CONTAINS
INFORMATION THAT IS NOT CONFIDENTIAL TO THE
UNIVERSITY OF MEMPHIS. BY RETENTION, THE
RECIPIENT AGREES TO REPRODUCE OR COPY IT IN
PART AND IN WHOLE WITHOUT WRITTEN PERMISSION,
AND TO MAKE ANY USE OF IT AS SEEMS FITTING.

UNLESS OTHERWISE SPECIFIED:
ALL DIMENSIONS ARE INCHES

UNSPECIFIED TOLERANCES

LENGTH	SURFACE FINISH
.0 = ±.1	RMS 140
.00 = ±.01	µin
.000 = ±.005	ANGULAR ±.25°
.0000 = ±.005	

SIZE DATE

A 05-19-2016

DWG NO

504010-007

REV

A

SCALE: 2=1

DRAWN BY: RH