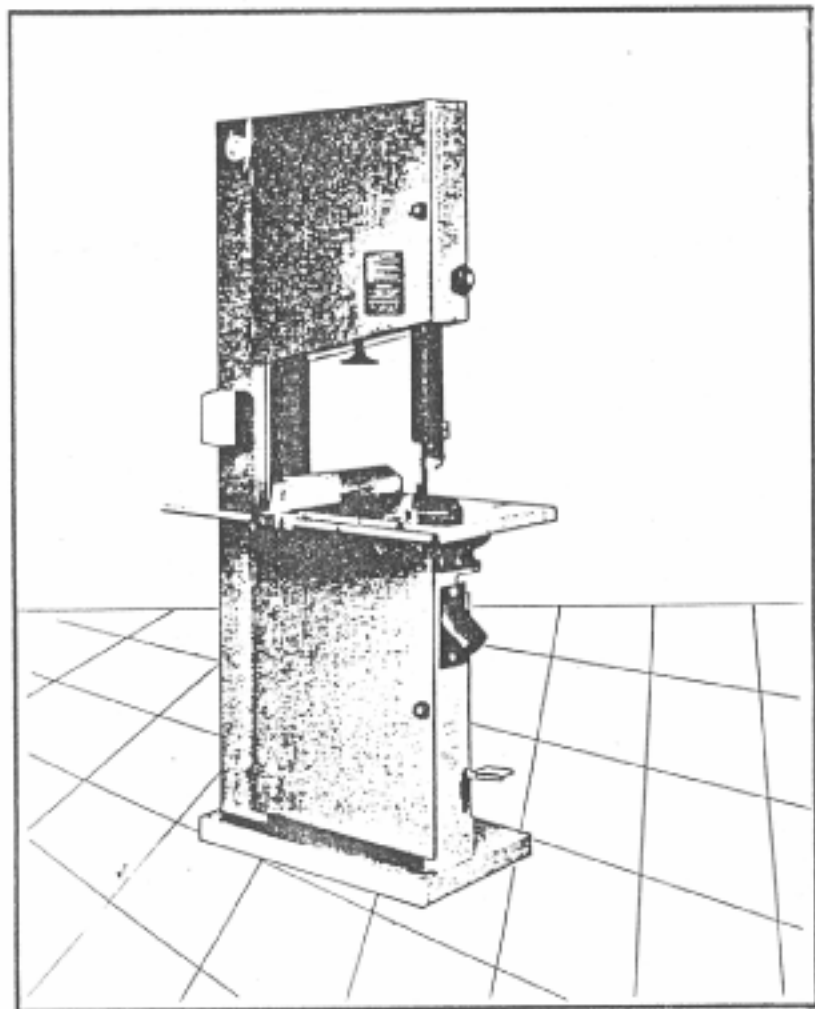


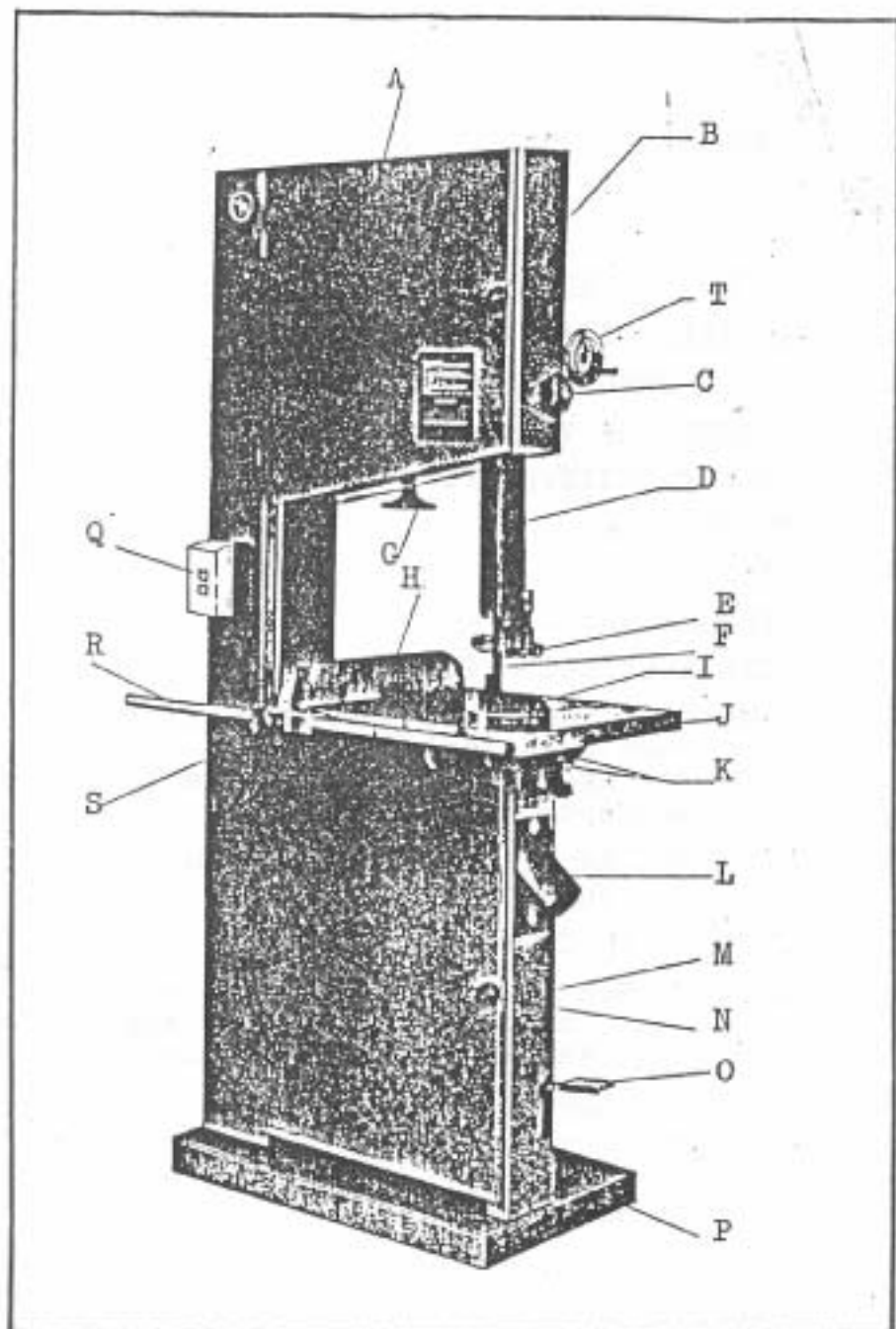
WOOD CUTTING BAND SAW

OWNERS MANUAL



SAFETY RULES FOR ALL TOOLS:

1. FOR YOUR OWN SAFETY, READ INSTRUCTION MANUAL BEFORE OPERATION THE TOOL.
2. KEEP GUARDS IN PLACE AND IN WORKING ORDER.
3. GROUND ALL TOOLS.
4. REMOVE ADJUSTING KEYS AND WRENCHES.
5. KEEP WORK AREA CLEAN.
6. DON'T USE IN DANGEROUS ENVIRONMENT.
7. KEEP CHILDREN AND VISITORS AWAY.
8. MAKE WORKSHOP CHILDPROOF.
9. DON'T FORCE TOOL.
10. USE RIGHT TOOL.
11. WEAR PROPER APPAREL.
12. ALWAYS WEAR EYE PROTECTION.
13. SECURE WORK. Use clamp or a vise to hold work when practical. It's safer than using your hand and frees both hands to operate tool.
14. DON'T OVERREACH. Keep proper footing and balance at all times.
15. MAINTAIN TOOLS IN TOP CONDITION.
16. DISCONNECT TOOLS. Before servicing and when changing accessories such as blades, bits, cutters, etc.
17. USE RECOMMENDED ACCESSORIES.
18. AVOID ACCIDENTAL STARTING. Make sure switch is in "OFF" position before plugging in power cord.
19. NEVER STAND ON TOOL.
20. CHECK DAMAGED PARTS.
21. DIRECTION OF FEED. Feed work into a blade or cutter against the direction of rotation of the blade or cutter only.
22. NEVER LEAVE TOOL RUNNING UNATTENDED. TURN POWER OFF. Don't leave tool until it comes to a complete stop.
23. DRUGS, ALCOHOL, MEDICATION. Do not operate tool while under the influence of drug, alcohol or any medication.
24. MAKE SURE TOOL IS DISCONNECTED FROM POWER SUPPLY while motor is being mounted, connected or reconnected.



- | | |
|--------------------------------|----------------------|
| A. Upper wheel guard | G. Adjust wheel |
| B. Cross knob | H. Fence |
| C. Knob screw | M. Body |
| D. Blade guard | N. Cross knob |
| E. Blade guide support (Upper) | O. Brake pedal |
| F. Saw blade | P. Lower wheel guard |
| I. Miter gage | Q. Switch |
| J. Working table | R. Fence guide pipe |
| K. Blade guide support (Lower) | S. Fence knob |
| L. Dust chute | T. Hand wheel |

DESCRIPTION:

The bandsaw it is complete with two wheels are particularly suitable to cut wood, plastics, alloy, and can carry out longitudinal, transversal, oblique cuts and all outlining operations. The working table has grounded cast iron (20"x24"), It is can be tilted up to 45° and includes a fence for straight cuts adjustable both on the right and on the left of the blade.

The two cast iron wheels are perfectly balanced and rubber coated.

FIG.1(G) Adjust wheel for the upper wheel is adjustable in its height in order to enable to assemble and disassemble the blade.

When check blade in the center, you can find the machine back, you can see have knob screw and two hex screw, knob screw its central wheel inside or outside, and hex screw its central wheel on the right or left.

The lower wheel is provided with a little brush which maintains it always cleaned from sawdust.

The guides of blade are easily adjustable (FIG 1,E), The upper guide (lower guide) can be vertically removed. It is also provided with the appropriate safety guide.

The bandsaws are provided with all safety guards according to the safety regulations.

The machine base have four holes (730mm X435mm), its can bracket on the land for the working.

OPERATING INSTRUCTION:

WARNING:

Before connecting the machine to the network, be sure that tension corresponds to the one indicated on the motor.

The ball bearings are self-lubricated and do not need to be oiled any longer.

The rubber coating on wheels has to be kept perfectly cleaned in order to avoid unbalances and vibrations during working operations.

Be careful that blade works with its teeth on the rubber edges in order to avoid scratches and breakings on it.

When the cutting operation is terminated, always loosen the blade otherwise it could get broken.

A correct use and maintenance of the machine will prevent it from any damage.

MACHINE ADJUSTMENT:

BLADE TENSIONING:

(FIG.1)-G. The adjust wheel allows the tensioning of the blade and its assembling and disassembling.

UPPER WHEEL ADJUSTMENT:

After machine have knob screw can adjust blade on the order.

BLADE GUIDE ADJUSTMENT:

(FIG.1)-E,K. The blade guide support has to rotate only when the blade is cutting and should have a distance of 1-2 mm from the blade back when not operating.

In order to adjust the guide support its necessary to intervene on the locking screw by means of the spanner supplied as standard.

The blade guide supports E,K have to be adjusted by means of the relative locking screw and have to maintain a distance of 0.5 mm from the blade.

The blade guide supports should never touch the blade teeth.

The same written above applies for the adjustment of the lower blade

guide located under the worktable.

The band saw it is provided with an upper blade guide mounting special hardened and rotating discs which allow the lateral centering.

The lateral discs have to be adjusted by means of the apposite knob and locked at the correct position of 0.5mm from the blade while the thrust disc should have a distance of 1-2mm from the blade back side.

The upper blade guide unit can be adjusted in its height by means of the knob C. It has to be set according to the thickness of the piece being cut and maintained at a distance of 5mm from it.

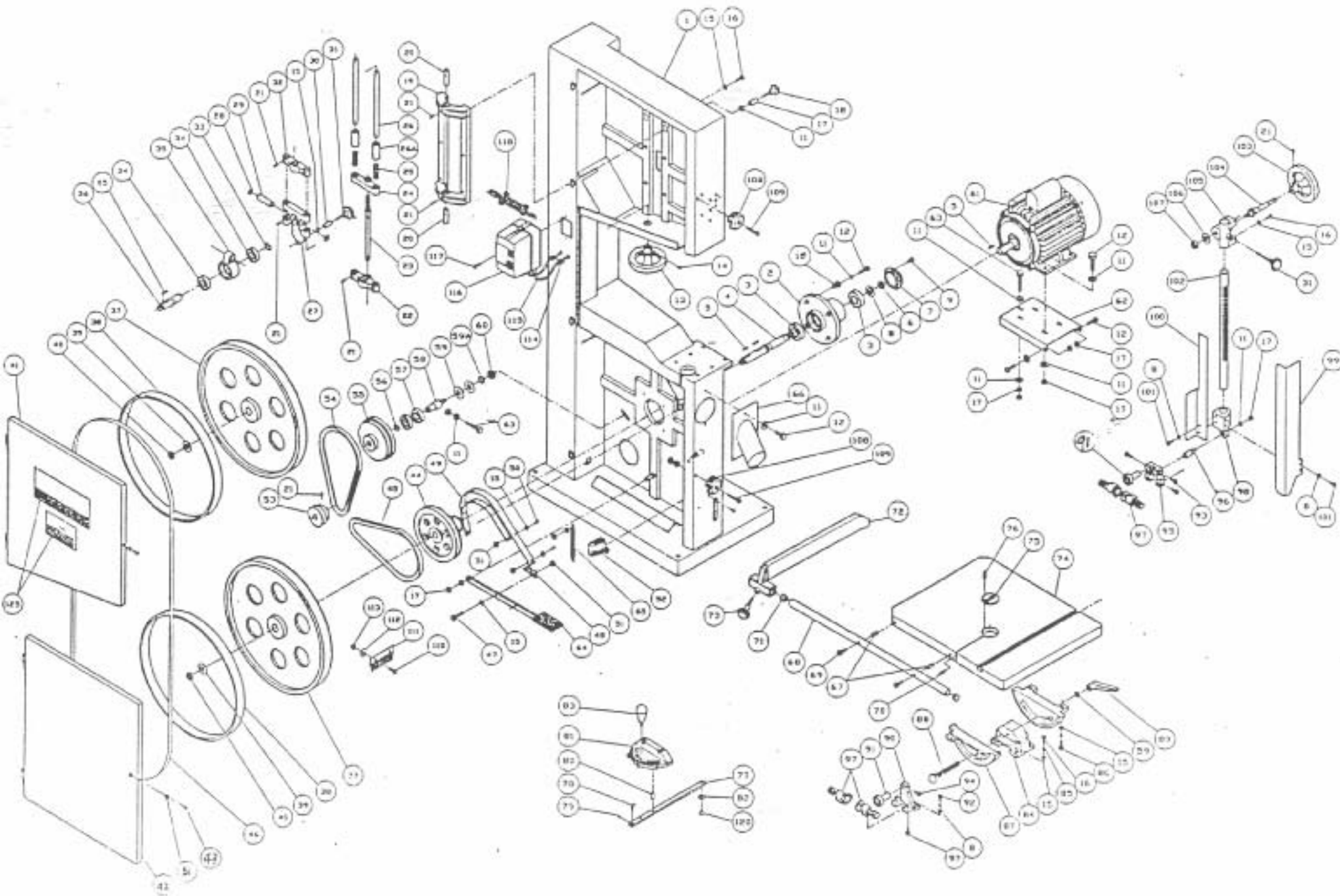
A special device on the blade guide avoids that it goes down when loosening the knob screw, then turn the hand wheel (FIG.1) T.

WORKTABLE TILTING:

Loosen the screw nut and lock them when the table is at desired position

RUBBER COATING REPLACEMENT ON WHEEL:

Take off all rubber from the wheel with acetone. Assemble the new rubber coating and glue it to the wheel by means of bostic or similar material and turn the glued rubber in order to level the thickness and render it slightly convex.



PART NO	DESCRIPTION	Q'TY	PART NO	DESCRIPTION	Q'TY
01	Body	1	39	Washer 3/4"	2
02	Bearing Base	1	40	Hex Nut 3/4"-16NF	2
03	Bearing 6206zz	2	41	Upper Guard	1
04	Shaft	1	42	Lower Grade	1
05	Key 7x7x25	4	43	Hex Screw 1/4x1 1/4"	2
06	Hex Nut 3/4x16NF	1	44	Brake Wheel	1
07	Bearing Cover	1	45	V-Belt B-31	1
08	Washer 3/4"	1	46	Blade 1"x0.7x154 1/2"	1
09	Pan Screw 1/4x5/8"	3	47	CAP Screw 1/4x1 1/4"	1
10	Adjusting Screw	4	48	Brake Belt Locking	2
11	Spring Washer 3/8"	4	49	Brake Belt	1
12	Hex Screw 3/8x1 1/2"	4	50	Hex Screw 1/4x5/8"	2
13	Adjust Wheel	1	51	Hex Nut 1/4x24NC	2
14	Set Screw 5/16x3/8"	1	52	Brake Switch	1
15	Washer 3/8"	6	53	Motor Pulley	1
16	Hex Screw 3/8x1"	6	54	V-Belt B-25	1
17	Bush	2	55	Intermediate Wheel	1
18	Lock Screw 5/16x3"	2	56	C-Ring S-20	1
19	Upper Wheel Base	1	57	Bearing 6204zz	2
20	Bracket Shaft	2	58	Intermediate Wheel Shaft	1
21	Set Screw 5/16x3/8"	4	59	Washer 1/2"	2
22	Adjust Bracket	1	60	Hex Nut 1/2"	1
23	Adjust Screw	1	61	Motor	1
24	Elevator Bracket	1	62	Motor Mounting Plate	1
25	Spring	2	63	Hex Screw 3/8 2 1/2"	1
26	Guide Spindle	2	64	Brake Pedal	1
27	Upper Wheel Guide Bracket	1	65	Spring	1
28	C-Ring S-20	2	66	Dust Chute	1
29	Lever Shaft	1	67	Bush	2
30	Bush	2	68	Guide Rail	1
32	Upper Adjust Bracket	1	69	CAP Screw 5/16x2 1/2"	2
33	C-Ring S-25	1	70	Set Screw 5/16x1/2"	1
34	Bearing 6205zz	2	71	Rail Cover	2
35	Upper Wheel Bearing Base	1	72	Fence	1
36	Upper Wheel Shaft	1	73	Locking knob	1
37	Blade Wheel	2	74	Working Table	1
38	Rudder Coating	2	75	Insert	1

PARTS NO	DESCRIPTION	Q'TY	PART NO	DESCRIPTION	Q'TY
76	Spring Pin	2	113	Nut 3/16"-24NC	2
77	Miter Gage Bar	1	114	Strain Relief	5
78	Pointer	1	115	Motor Cord	1
79	Pan Screw 3/16x1/4"	1	116	Switch on/off	1
80	Pin	1	117	Screw	2
81	Miter Gage	1	118	Power Cord	1
82	Guide Disc	1			
83	Locking Screw	1	120	Screw	1
84	Table Gage Bracket	1			
85	Spring Washer 3/8"	4			
86	Hex Screw 3/8x1 1/2"	4			
87	Trunnion	2			
88	Locking Handle	1			
89	Locking Handle	1			
90	Lower Guide Bracket	1			
91	Blade Support Shaft	1			
92	Hex Screw	2			
93	CAP Screw 1/4x5/8"	2			
94	Set Screw 1/4x3/8"	1			
95	Upper Guide Bracket	1			
96	Locking Shaft	1			
97	Guide Wheel	4			
98	Guide Bar Bracket	1			
99	Blade Guard	1			
100	Blade Inter Guard	1			
101	Hex Screw 1/4x5/8"	2			
102	Guide Bar	1			
103	Elevator hand Wheel	1			
104	Gear	1			
105	Guide Bar Case Bracket	1			
106	Washer	1			
107	Nut 1/2"	1			
108	Lock Knob	2			
109	Screw 1/4x5/8"	2			
110	Screw 3/16x1 1/2"	2			
111	Brush	1			
112	Washer 3/16"	2			